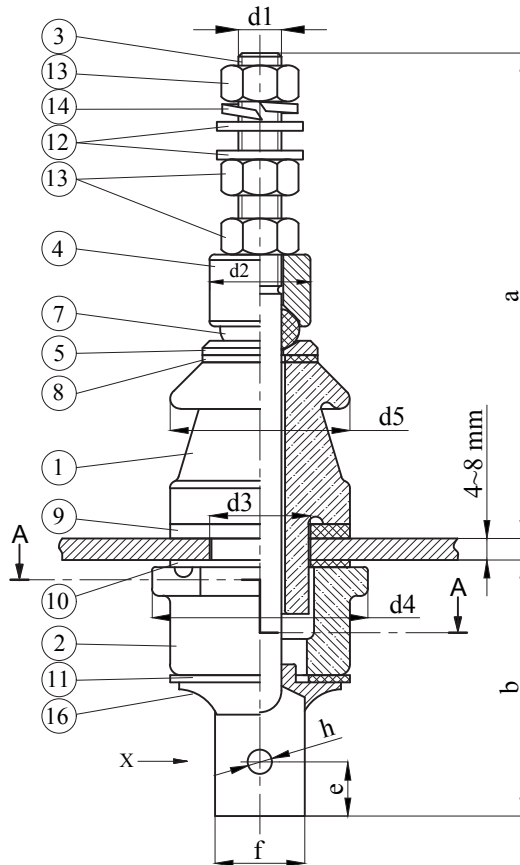
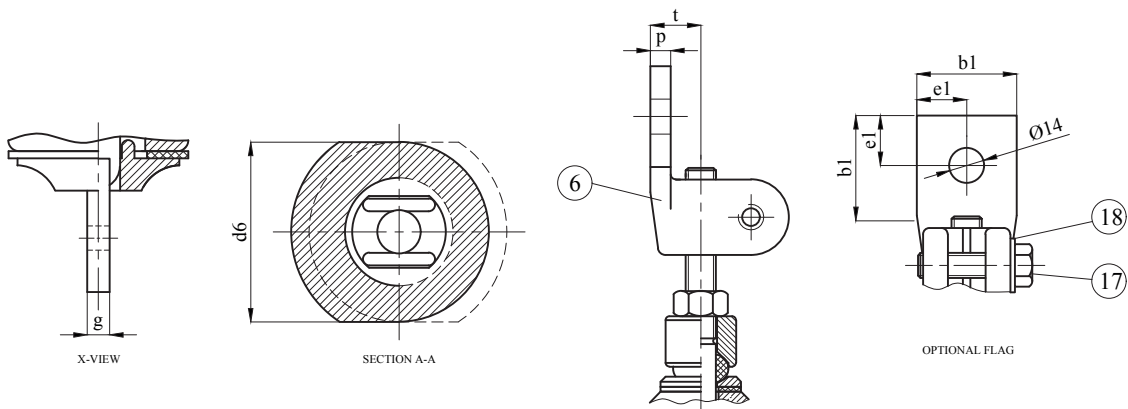


1 kV 250 A - 630 A
EN 50386 Transformer Bushings



Insulation Levels acc. to IEC 60137:2017			
1	Highest Voltage (kV)	1,2	1,2
2	Rated Current (A)	250	630
3	Lightning Impulse Withstand Voltage (BIL) (kV)	20	20
4	Power Frequency Withstand Voltage (kV)	dry 10 wet 10	dry 10 wet 10
5	Creepage Distance (mm)	55	75
6	Rated Thermal Short-time Current (2s) (kA)	4,42	11,14
7	Rated Dynamic Current (kA)	15,63	39,37
8	Minimum Cantilever Withstand Load (N)	1000	1000

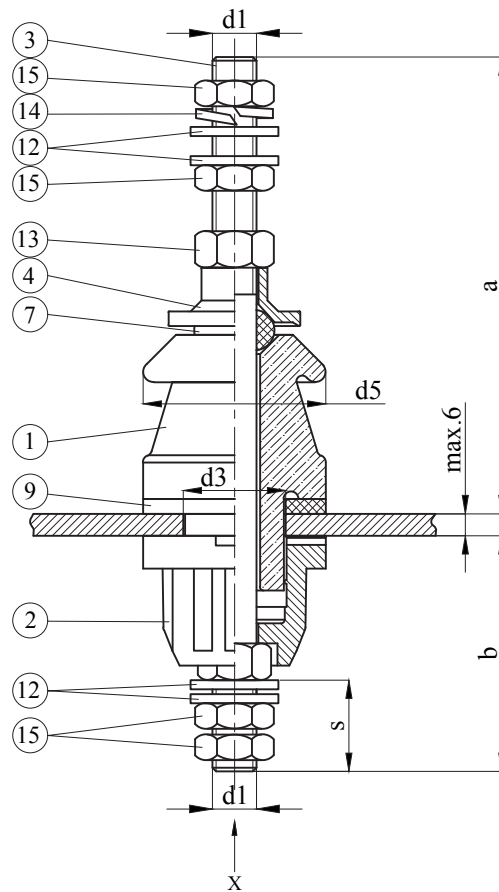
18	1	Washer DIN 125
17	1	Screw DIN 933
16	1	Closing Piece
14	1	Spring Washer DIN 127
13	3	Brass Nut DIN 934
12	2	Brass Washer DIN 125
11	1	Internal Gasket "P"
10	1	Internal Gasket "O"
9	1	Flange Gasket "N"
8	1	Plain Gasket "M"
7	1	Ring Gasket "J"
6	1	Brass Flag DIN 43675-DP
5	1	Brass Washer "G"
4	1	Brass Washer "E"
3	1	Brass Stem
2	1	Bottom Porcelain "B"
1	1	Top Porcelain "A"
POS.	PCS.	DESCRIPTION



***All dimensions are "mm"

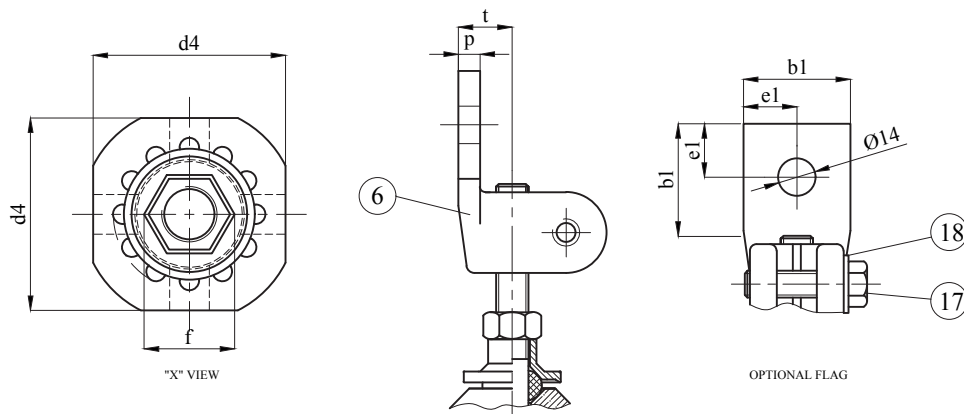
Type	Description	a _{max}	b _{max}	e	f	g	h	d1	d2	d3 ^{±0}	d4	d5	d6	p	t	b1	e1	Weight (-kg)
AP / 250A	Without Flag	135	76	15	25	5	Ø7	M12x1,75	28	28	60	50	50	8	20	40	20	0.7
	With Flag																	1.0
AP / 630A	Without Flag	170	90	20	39	8	Ø6,7	M20x2,5	40	45	85	70	70	8	20	40	20	1.8
	With Flag																	2.1

1 kV 250 A - 630 A
EN 50386 Transformer Bushings



Insulation Levels acc. to IEC 60137:2017			
1	Highest Voltage (kV)	1,2	1,2
2	Rated Current (A)	250	630
3	Lightning Impulse Withstand Voltage (BIL) (kV)	20	20
4	Power Frequency Withstand Voltage (kV)	dry 10 wet 10	dry 10 wet 10
5	Creepage Distance (mm)	55	70
6	Rated Thermal Short-time Current (2s) (kA)	4,42	11,14
7	Rated Dynamic Current (kA)	15,63	39,37
8	Minimum Cantilever Withstand Load (N)	1000	1000

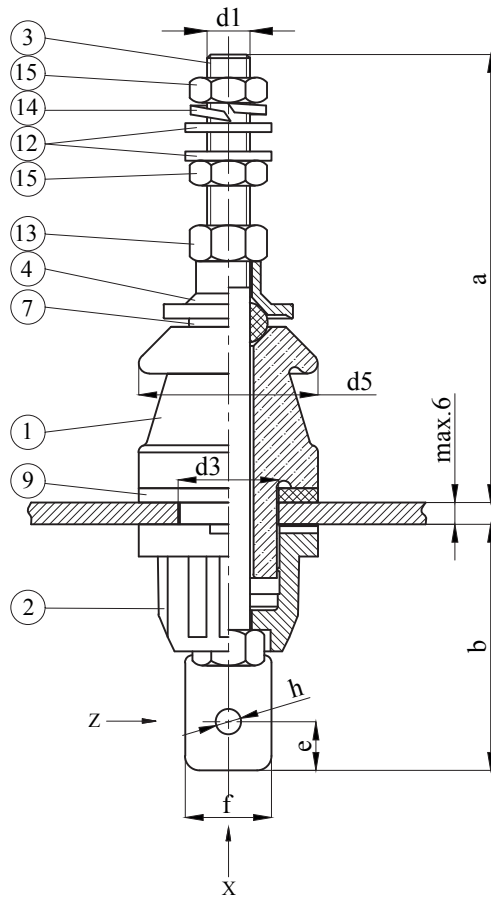
POS.	PCS.	DESCRIPTION
18	1	Washer DIN 125
17	1	Screw DIN 933
15	4	Brass Lock Nut DIN 936
14	1	Spring Washer DIN 127
13	1	Brass Nut DIN 934
12	4	Brass Washer DIN 125
9	1	Flange Gasket "N"
7	1	Ring Gasket "J"
6	1	Brass Flag 43675-DP
4	1	Brass Cap
3	1	Brass Stem
2	1	Bottom Insulation Body "B"
1	1	Top Porcelain "A"



***All dimensions are "mm"

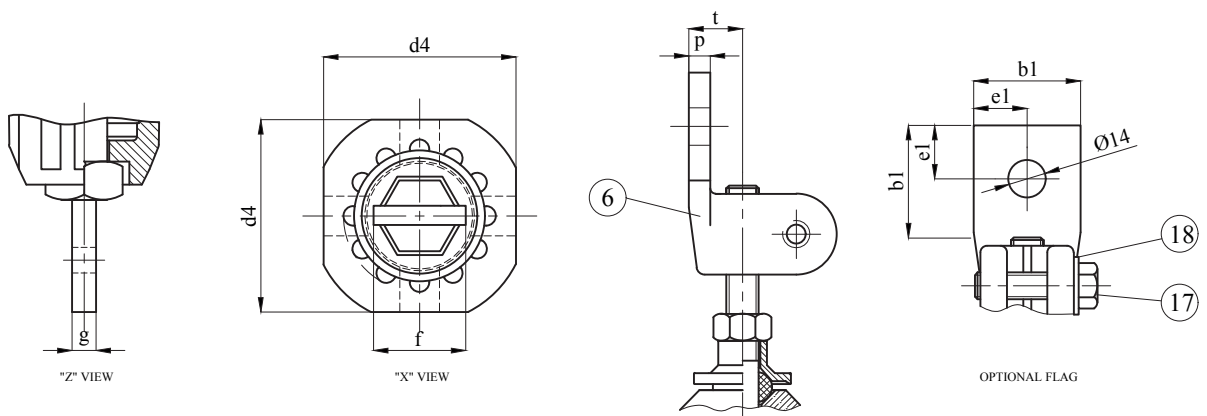
Type	Description	a	b	s ±0,3	f	d1	d3 ^{±0,2}	d4	d5	p	t	b1	e1	Weight (-kg)
EN / 250A	Without Flag	~125	64,5	25	23,5	M12x1,75	28	50	50	8	20	40	20	0.5
	With Flag													0.9
EN / 630A	Without Flag	~164	82	40	36	M20x2,5	45	70	70	8	20	40	20	1.4
	With Flag													1.7

1 kV 250 A - 630 A
EN 50386 Transformer Bushings



Insulation Levels acc. to IEC 60137:2017			
1	Highest Voltage (kV)	1,2	1,2
2	Rated Current (A)	250	630
3	Lightning Impulse Withstand Voltage (BIL) (kV)	20	20
4	Power Frequency Withstand Voltage (kV)	dry 10 wet 10	dry 10 wet 10
5	Creepage Distance (mm)	55	70
6	Rated Thermal Short-time Current (2s) (kA)	4,42	11,14
7	Rated Dynamic Current (kA)	15,63	39,37
8	Minimum Cantilever Withstand Load (N)	1000	1000

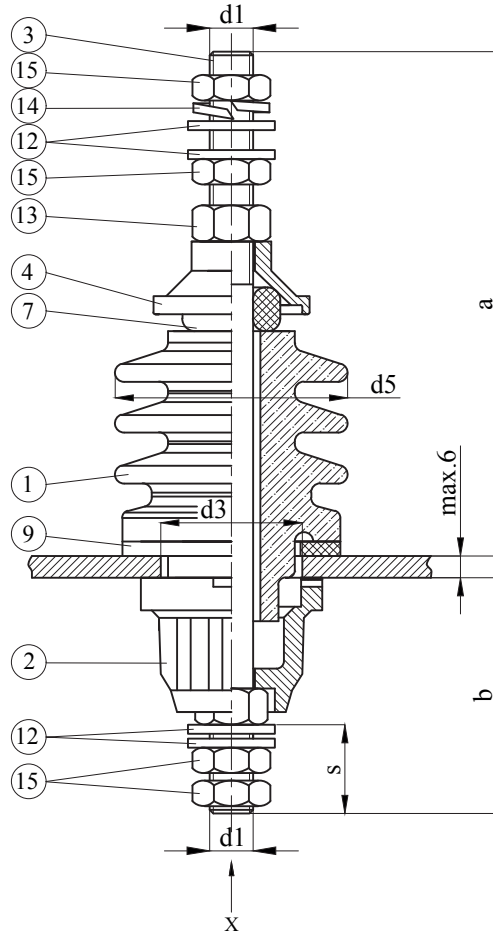
18	1	Washer DIN 125
17	1	Screw DIN 933
15	2	Brass Lock Nut DIN 936
14	1	Spring Washer DIN 127
13	1	Brass Nut DIN 934
12	2	Brass Washer DIN 125
9	1	Flange Gasket "N"
7	1	Ring Gasket "J"
6	1	Brass Flag 43675-DP
4	1	Brass Cap
3	1	Brass Stem
2	1	Bottom Insulation Body "B"
1	1	Top Porcelain "A"
POS.	PCS.	DESCRIPTION



***All dimensions are "mm"

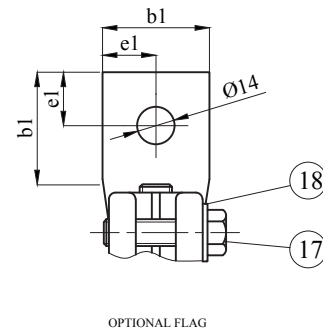
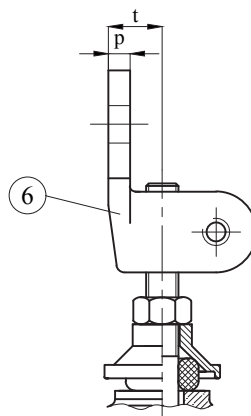
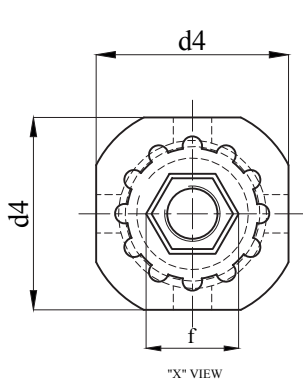
Type	Description	a	b	e	f	g	h	d1	d3 ^{±0.05}	d4	d5	p	t	b1	e1	Weight (-kg)
EN / 250A	Without Flag	~140	68	13	24	5	Ø7	M12x1,75	28	50	50	8	20	40	20	0.5
	With Flag															0.9
EN / 630A	Without Flag	~164	80	15	35	8	Ø7	M20x2,5	45	70	70	8	20	40	20	1.4
	With Flag															1.7

1 kV 250 A - 630 A
EN 50386 Transformer Bushings



Insulation Levels acc. to IEC 60137:2017			
1	Highest Voltage (kV)	1,2	1,2
2	Rated Current (A)	250	630
3	Lightning Impulse Withstand Voltage (BIL) (kV)	20	20
4	Power Frequency Withstand Voltage (kV)	dry 10 wet 10	dry 10 wet 10
5	Creepage Distance (mm)	115	115
6	Rated Thermal Short-time Current (2s) (kA)	4,42	11,14
7	Rated Dynamic Current (kA)	15,63	39,37
8	Minimum Cantilever Withstand Load (N)	1000	1000

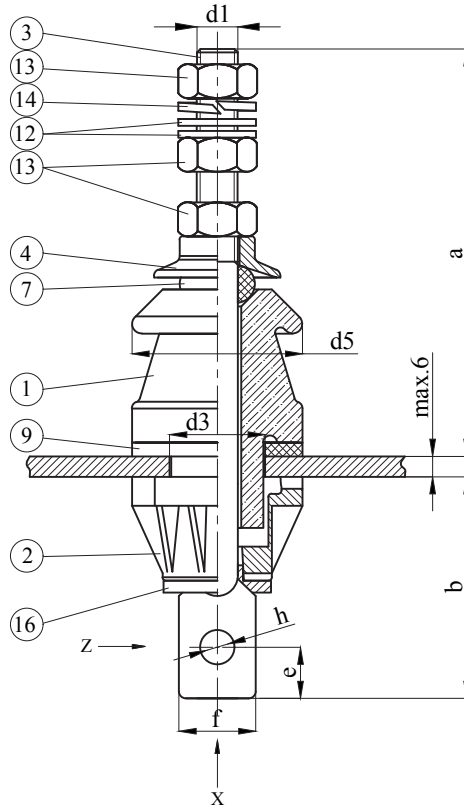
POS.	PCS.	DESCRIPTION
18	1	Washer DIN 125
17	1	Screw DIN 933
15	4	Brass Lock Nut DIN 936
14	1	Spring Washer DIN 127
13	1	Brass Nut DIN 934
12	4	Brass Washer DIN 125
9	1	Flange Gasket "N"
7	1	Ring Gasket "J"
6	1	Brass Flag 43675-DP
4	1	Brass Cap
3	1	Brass Stem
2	1	Bottom Insulation Body "B"
1	1	Top Porcelain "A"



***All dimensions are "mm"

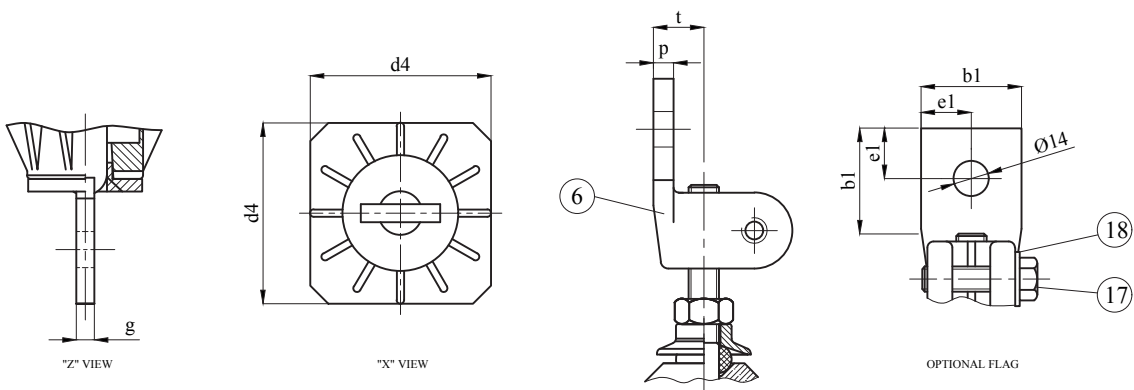
Type	Description	a	b	s ±0,3	f	d1	d3	d4	d5	p	t	b1	e1	Weight (-kg)
EN / 250A	Without Flag	~139	65	25	24	M12x1,75	36	50	64	8	20	40	20	0.7
	With Flag													1.1
EN / 630A	Without Flag	~164	80	40	36	M20x2,5	45	70	72	8	20	40	20	1.5
	With Flag													1.8

1 kV 250 A - 630 A
EN 50386 Transformer Bushings



Insulation Levels acc. to IEC 60137:2017			
1	Highest Voltage (kV)	1,2	1,2
2	Rated Current (A)	250	630
3	Lightning Impulse Withstand Voltage (BIL) (kV)	20	20
4	Power Frequency Withstand Voltage (kV)	dry 10 wet 10	dry 10 wet 10
5	Creepage Distance (mm)	55	70
6	Rated Thermal Short-time Current (2s) (kA)	4,42	11,14
7	Rated Dynamic Current (kA)	15,63	39,37
8	Minimum Cantilever Withstand Load (N)	1000	1000

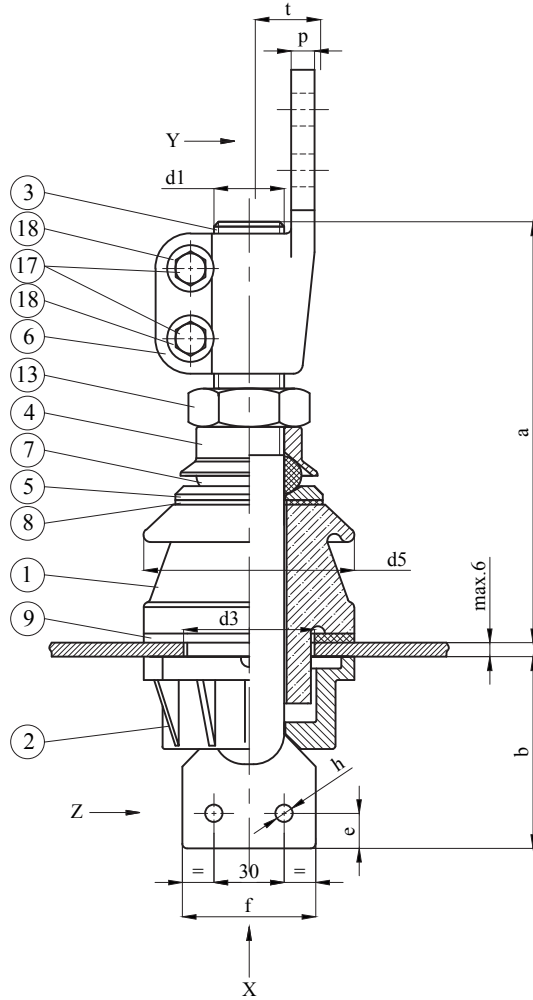
POS.	PCS.	DESCRIPTION
18	1	Washer DIN 125
17	1	Screw DIN 933
16	1	Closing Piece
14	1	Spring Washer DIN 127
13	3	Brass Nut DIN 934
12	2	Brass Washer DIN 125
9	1	Flange Gasket "N"
7	1	Ring Gasket "J"
6	1	Brass Flag 43675-DP
4	1	Brass Cap
3	1	Brass Stem
2	1	Bottom Insulation Body "B"
1	1	Top Porcelain "A"



***All dimensions are "mm"

Type	Description	a	b	e	f	g	h	d1	d3 ^{±0,05}	d4	d5	p	t	b1	e1	Weight (-kg)
EN / 250A	Without Flag	120,5	65,5	15	22	5	Ø6,7	M12x1,75	28	50	50	8	20	40	20	0,5
	With Flag						1,0									
	Without Flag						0,5									
	With Flag						1,0									
EN / 630A	Without Flag	162,5	66,5	15	32	8	Ø6,7	M20x2,5	45	70	70	8	20	40	20	1,5
	With Flag						1,7									
	Without Flag						1,5									
	With Flag						1,7									

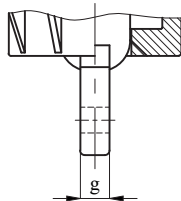
1 kV 1000 A - 1250 A
EN 50386 Transformer Bushings



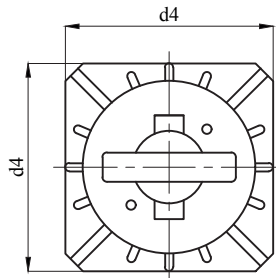
Insulation Levels acc. to IEC 60137:2017

1	Highest Voltage (kV)	1,2	1,2
2	Rated Current (A)	1000	1250
3	Lightning Impulse Withstand Voltage (BIL) (kV)	20	20
4	Power Frequency Withstand Voltage (kV)	dry 10 wet 10	dry 10 wet 10
5	Creepage Distance (mm)	75	75
6	Rated Thermal Short-time Current (2s) (kA)	17,68	22,1
7	Rated Dynamic Current (kA)	62,5	78,12
8	Minimum Cantilever Withstand Load (N)	1250	1250

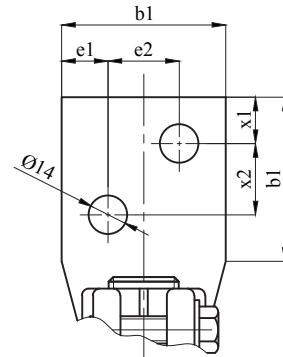
POS.	PCS.	DESCRIPTION
18	2	Washer DIN 125
17	2	Screw DIN 933
13	1	Brass Lock Nut DIN 936
9	1	Flange Gasket "N"
8	1	Plain Gasket "M"
7	1	Ring Gasket "J"
6	1	Brass Flag DIN 43675-EP
5	1	Brass Washer "G"
4	1	Cap
3	1	Stem
2	1	Bottom Insulation Body "B"
1	1	Top Porcelain "A"



"Z" VIEW



"X" VIEW

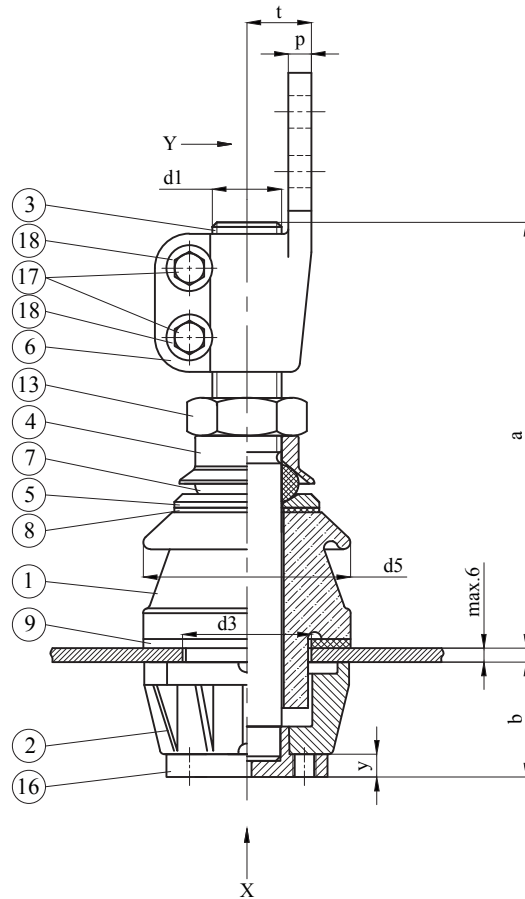


"Y" VIEW

***All dimensions are "mm"

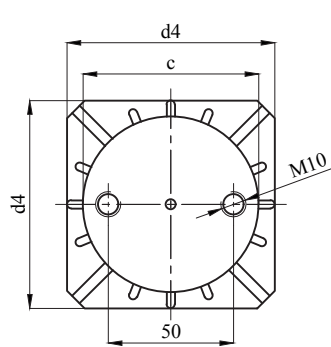
Type	a	b	c	f	g	h	d1	d3 ²	d4	d5	p	t	b1	e1	e2	x1	x2	Weight (-kg)	Stem Material
1/1000A	177,5	84,5	15	57	12,5	Ø6,7	M30x2	56	90	90	10	28	60	17	26	17	26	3.8	Brass
1/1000A						Ø12													
1/1250A	177,5	84,5	15	57	12,5	Ø6,7	M30x2	56	90	90	10	28	60	17	26	17	26	3.9	Copper
1/1250A						Ø12													

1 kV 1000 A - 1250 A
EN 50386 Transformer Bushings

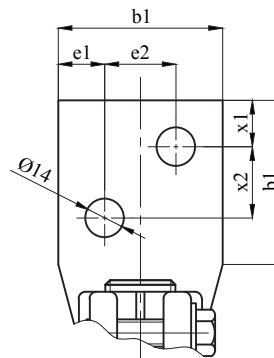


Insulation Levels acc. to IEC 60137:2017			
1	Highest Voltage (kV)	1,2	1,2
2	Rated Current (A)	1000	1250
3	Lightning Impulse Withstand Voltage (BIL) (kV)	20	20
4	Power Frequency Withstand Voltage (kV)	dry 10 wet 10	dry 10 wet 10
5	Creepage Distance (mm)	75	75
6	Rated Thermal Short-time Current (2s) (kA)	17,68	22,1
7	Rated Dynamic Current (kA)	62,5	78,12
8	Minimum Cantilever Withstand Load (N)	1250	1250

POS.	PCS.	DESCRIPTION
18	2	Washer DIN 125
17	2	Screw DIN 933
16	1	Brass Closing Piece
13	1	Brass Lock Nut DIN 936
9	1	Flange Gasket "N"
8	1	Plain Gasket "M"
7	1	Ring Gasket "J"
6	1	Brass Flag DIN 43675-EP
5	1	Brass Washer "G"
4	1	Cap
3	1	Stem
2	1	Bottom Insulation Body "B"
1	1	Top Porcelain "A"



"X" VIEW



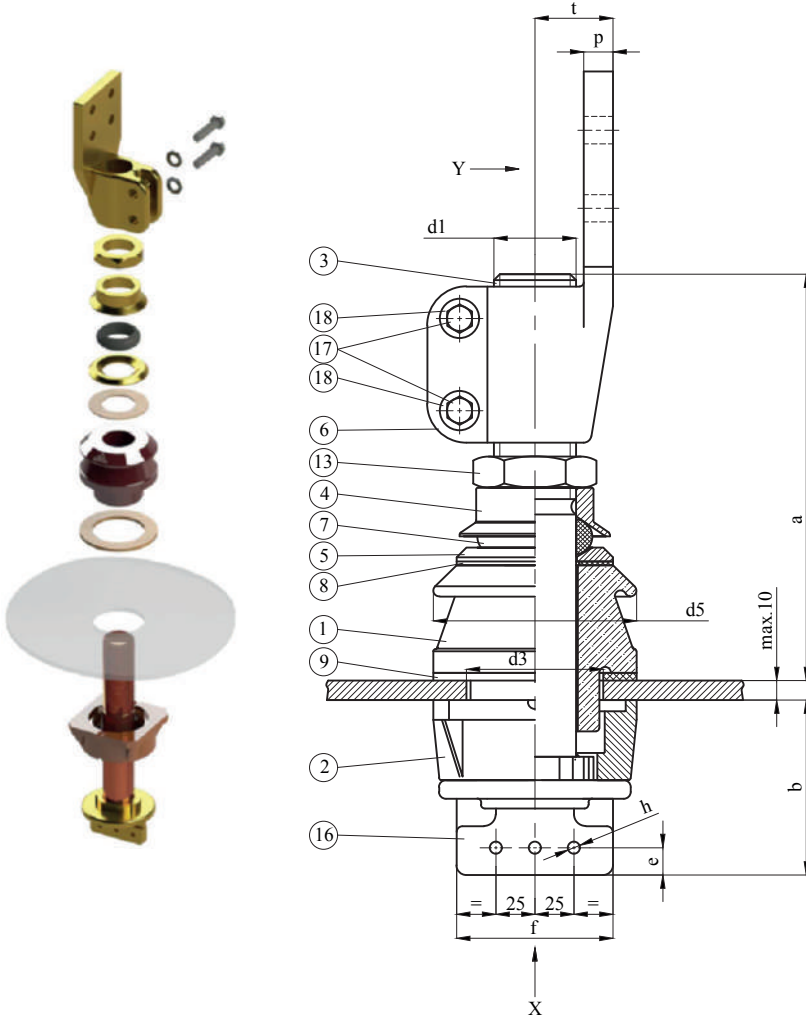
"Y" VIEW

***All dimensions are "mm"

Type	a	b	c	y	d1	d3 ^{±0.05}	d4	d5	p	t	b1	e1	e2	x1	x2	Weight (-kg)	Stem Material
1/1000A	185	50	70	10	M30x2	56	90	90	10	28	60	17	26	17	26	3.9	Brass
1/1250A	185	50	70	10	M30x2	56	90	90	10	28	60	17	26	17	26	4.0	Copper

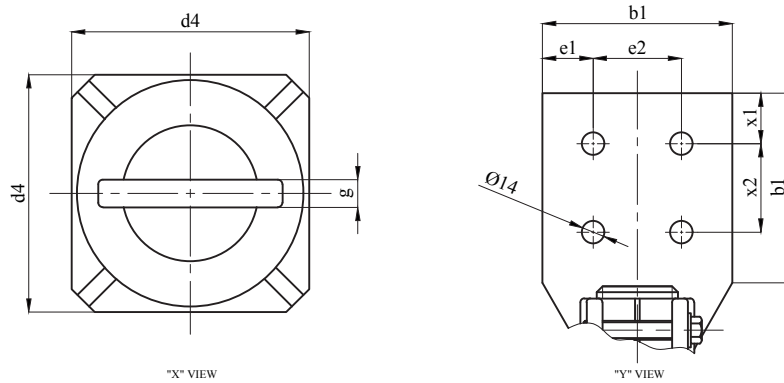


1 kV 1800 A - 2000 A
EN 50386 Transformer Bushings



Insulation Levels acc. to IEC 60137:2017			
1	Highest Voltage (kV)	1,2	1,2
2	Rated Current (A)	1800	2000
3	Lightning Impulse Withstand Voltage (BIL) (kV)	20	20
4	Power Frequency Withstand Voltage (kV)	dry 10 wet 10	dry 10 wet 10
5	Creepage Distance (mm)	75	75
6	Rated Thermal Short-time Current (2s) (kA)	31,82	35,36
7	Rated Dynamic Current (kA)	112,5	125
8	Minimum Cantilever Withstand Load (N)	2000	2000

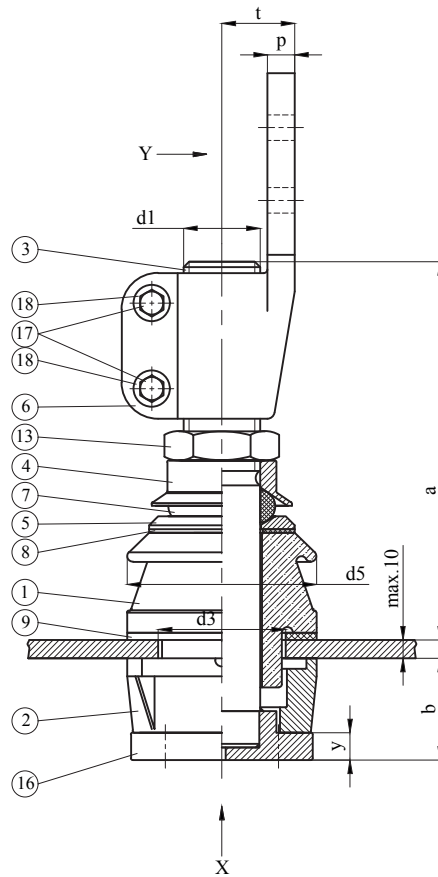
18	2	Washer DIN 125
17	2	Screw DIN 933
16	1	Brass Closing Piece
13	1	Brass Lock Nut DIN 936
9	1	Flange Gasket "N"
8	1	Plain Gasket "M"
7	1	Ring Gasket "J"
6	1	Brass Flag DIN 43675-FP
5	1	Brass Washer "G"
4	1	Cap
3	1	Stem
2	1	Bottom Insulation Body "B"
1	1	Top Porcelain "A"
POS.	PCS.	DESCRIPTION



All dimensions are "mm"

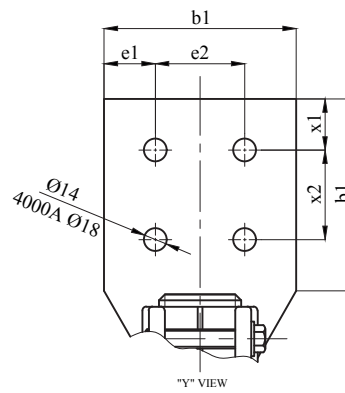
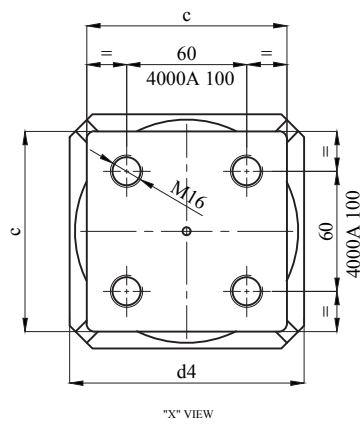
Type	a	b	e	f	g ⁻¹	h	d1	d3 ⁻¹	d4	d5	p	t	b1	e1	e2	x1	x2	Weight (-kg)	Stem Material
1/1800A	204	91	13	80	12	Ø6,7	M42x3	70	104	104	15	40	100	25	50	20	40	9.2	Brass
1/1800A	204	91	13	80	12	Ø12	M42x3	70	104	104	15	40	100	25	50	20	40	9.1	Copper
1/2000A	204	91	13	80	12	Ø6,7	M42x3	70	104	104	15	40	100	25	50	20	40	9.1	Copper
1/2000A	204	91	13	80	12	Ø12	M42x3	70	104	104	15	40	100	25	50	20	40	9.1	Copper

1 kV 2000 A ÷ 4000 A
EN 50386 Transformer Bushings



Insulation Levels acc. to IEC 60137:2017				
1	Highest Voltage (kV)	1,2	1,2	1,2
2	Rated Current (A)	2000	3150	4000
3	Lightning Impulse Withstand Voltage (BLI) (kV)	20	20	20
4	Power Frequency Withstand Voltage (kV)	dry 10 wet 10	dry 10 wet 10	dry 10 wet 10
5	Creepage Distance (mm)	75	75	85
6	Rated Thermal Short-time Current (2s) (kA)	35,36	55,68	70,71
7	Rated Dynamic Current (kA)	125	196,87	250
8	Minimum Cantilever Withstand Load (N)	2000	3150	3150

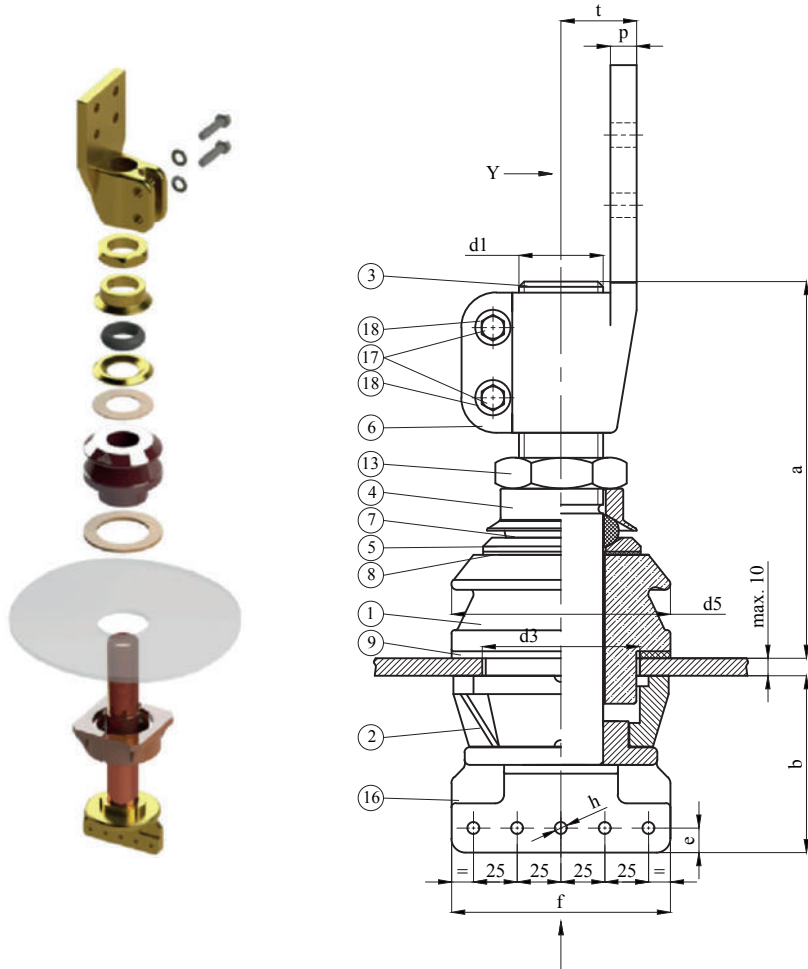
POS.	PCS.	DESCRIPTION
18	2	Washer DIN 125
17	2	Screw DIN 933
16	1	Brass Closing Piece
13	1	Brass Lock Nut DIN 936
9	1	Flange Gasket "N"
8	1	Plain Gasket "M"
7	1	Ring Gasket "J"
6	1	Brass Flag DIN 43675-FP
5	1	Brass Washer "G"
4	1	Cap
3	1	Stem
2	1	Bottom Insulation Body "B"
1	1	Top Porcelain "A"



***All dimensions are "mm"

Type	a	b	c	y	d1	d3 ³	d4	d5	p	t	b1	e1	e2	x1	x2	Weight (-kg)
1/2000A	206	56	100	15	M42x3	70	104	104	15	40	100	25	50	20	40	9.1
1/3150A	213	57	110	16,5	M48x3	90	125	125	15	45	120	30	60	20	40	13
1/4000A	257	70	160	24	M55x3	118	165	125	20	55	150	40	70	40	70	24.9

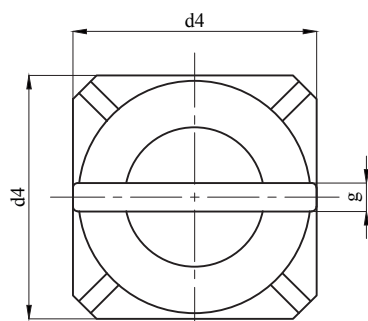
1 kV 3150 A
EN 50386 Transformer Bushings



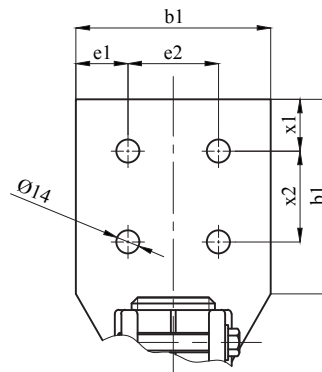
Insulation Levels acc. to IEC 60137:2017		
1	Highest Voltage (kV)	1,2
2	Rated Current (A)	3150
3	Lightning Impulse Withstand Voltage (BIL) (kV)	20
4	Power Frequency Withstand Voltage (kV)	dry 10 wet 10
5	Creepage Distance (mm)	75
6	Rated Thermal Short-time Current (2s) (kA)	55,68
7	Rated Dynamic Current (kA)	196,87
8	Minimum Cantilever Withstand Load (N)	3150

18	2	Washer DIN 125
17	2	Screw DIN 933
16	1	Brass Closing Piece
13	1	Brass Lock Nut DIN 936
9	1	Flange Gasket "N"
8	1	Plain Gasket "M"
7	1	Ring Gasket "J"
6	1	Brass Flag DIN 43675-FP
5	1	Brass Washer "G"
4	1	Cap
3	1	Copper Stem
2	1	Bottom Insulation Body "B"
1	1	Top Porcelain "A"
POS.	PCS.	DESCRIPTION

X



"X" VIEW

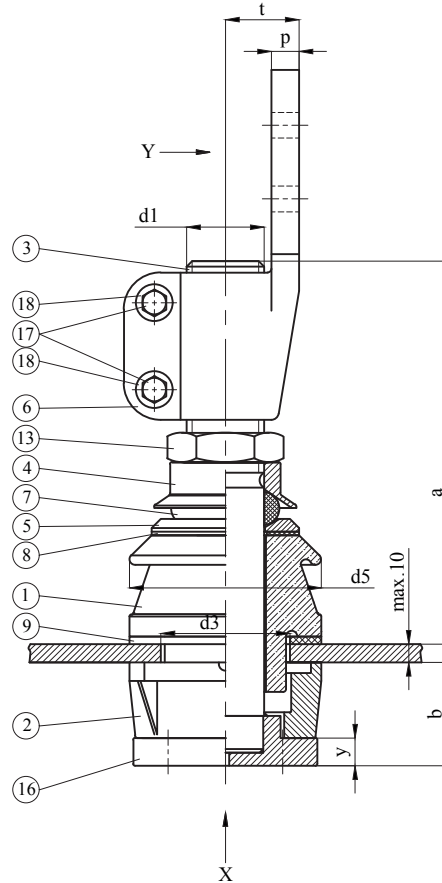


"Y" VIEW

***All dimensions are "mm"

Type	a	b	c	f	g ^{min}	h	d1	d3 ^{±0,2}	d4	d5	p	t	b1	e1	e2	x1	x2	Weight (-kg)	
1/3150A	215	101	14	125	14	Ø6,7	M48x3	90	125	125	15	45	120	30	60	20	40	12.7	
1/3150A						Ø12													

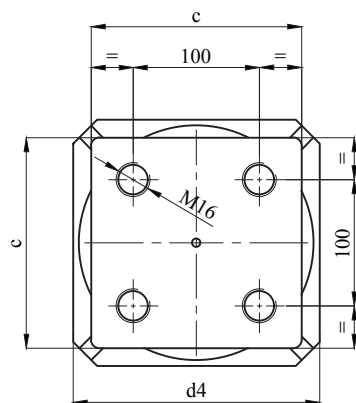
1 kV 5000 A
EN 50386 Transformer Bushing



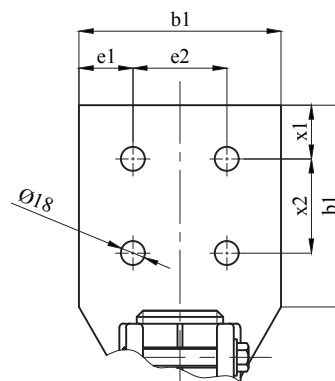
Insulation Levels acc. to IEC 60137:2017

Item	Parameter	Value
1	Highest Voltage (kV)	1,2
2	Rated Current (A)	5000
3	Lightning Impulse Withstand Voltage (BIL) (kV)	20
4	Power Frequency Withstand Voltage (kV)	dry 10 wet 10
5	Creepage Distance (mm)	85
6	Rated Thermal Short-time Current (2s) (kA)	70,71
7	Rated Dynamic Current (kA)	250
8	Minimum Cantilever Withstand Load (N)	3150

POS.	PCS.	DESCRIPTION
18	2	Washer DIN 125
17	2	Screw DIN 933
16	1	Brass Closing Piece
13	1	Brass Lock Nut
9	1	Flange Gasket "N"
8	1	Plain Gasket "M"
7	1	Ring Gasket "J"
6	1	Brass Flag
5	1	Brass Washer "G"
4	1	Cap
3	1	Copper Stem
2	1	Bottom Insulation Body "B"
1	1	Top Porcelain "A"



"X" VIEW

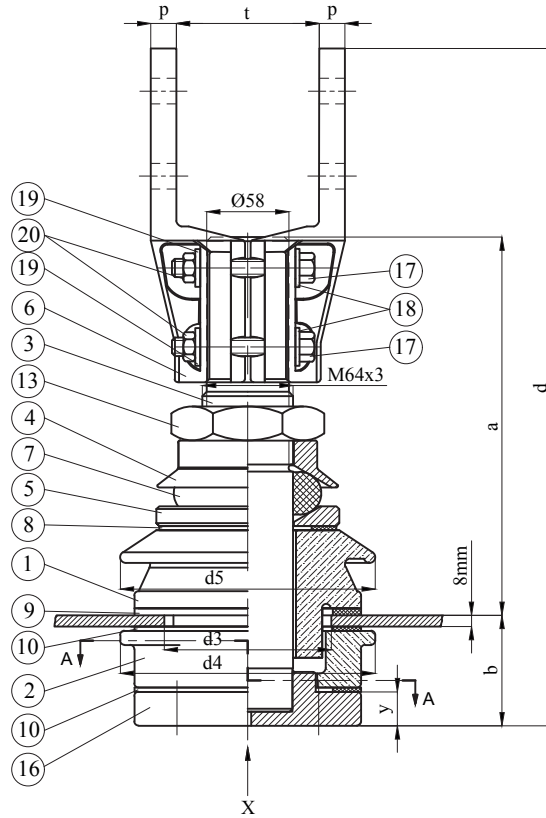


"Y" VIEW

***All dimensions are "mm"

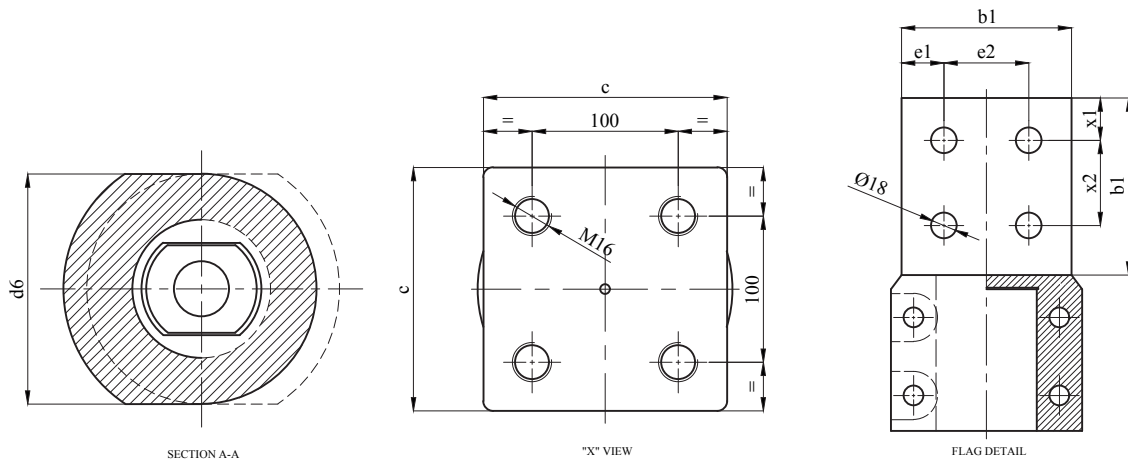
Type	a	b	c	y	d1	d3	d4	d5	p	t	b1	e1	e2	x1	x2	Weight (-kg)
1/5000A	260	75,5	160	30	M64x3	118	165	180	20	60	180	40	100	40	70	31

1 kV 5000 A
EN 50386 Transformer Bushing



Insulation Levels acc. to IEC 60137:2017		
1	Highest Voltage (kV)	1,2
2	Rated Current (A)	5000
3	Lightning Impulse Withstand Voltage (BIL) (kV)	20
4	Power Frequency Withstand Voltage (kV)	dry 10 wet 10
5	Creepage Distance (mm)	85
6	Rated Thermal Short-time Current (2s) (kA)	70,71
7	Rated Dynamic Current (kA)	250
8	Minimum Cantilever Withstand Load (N)	3150

20	4	Nut M12 DIN 934
19	4	Spring Washer M12 DIN 127
18	4	Washer M12 DIN 125
17	4	Screw DIN 933
16	1	Brass Closing Piece
13	1	Brass Lock Nut M64
10	2	Internal Gasket "X"
9	1	Flange Gasket "N"
8	1	Plain Gasket "M"
7	1	Ring Gasket "J"
6	2	Brass Flag
5	1	Brass Washer "G"
4	1	Cap
3	1	Copper Stem
2	1	Bottom Porcelain "B"
1	1	Top Porcelain "A"
POS.	PCS.	DESCRIPTION



All dimensions are "mm"

Type	a ₁	b ₁	c	d ₁	y	d3 ^{1/2}	d4	d5	d6	p	t	b1	e1	e2	x1	x2	Weight (-kg)
1/5000A	267	78	160	478	24	118	180	180	160	18	100	120	30	60	30	60	33