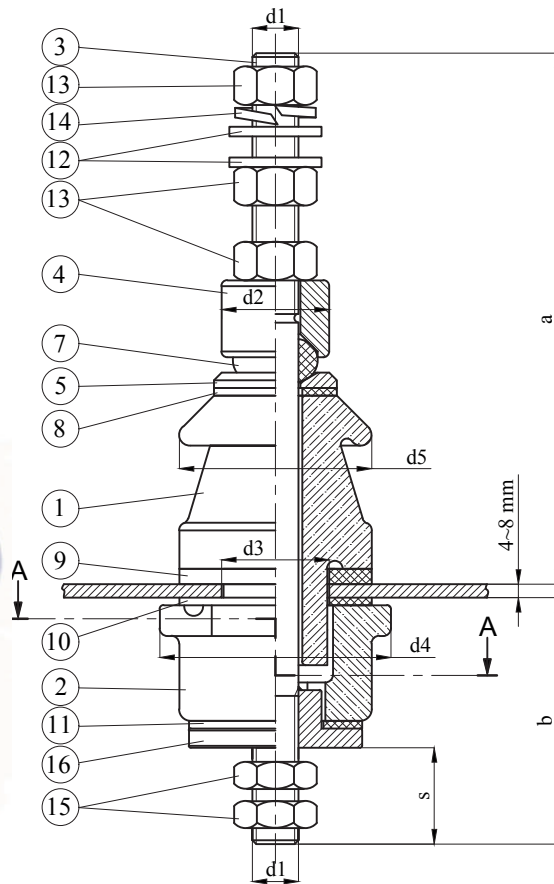
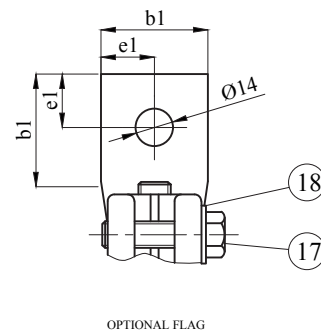
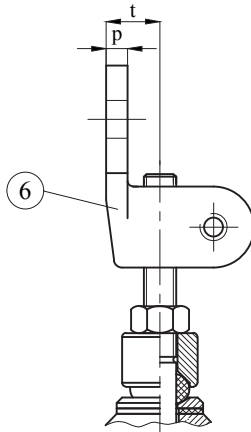
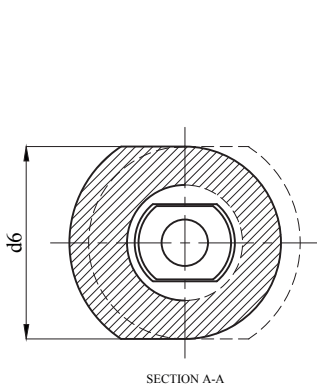


1 kV 250 A - 630 A  
DIN 42530 Transformer Bushings



Insulation Levels acc. to IEC 60137:2017			
1	Highest Voltage (kV)	1,2	1,2
2	Rated Current (A)	250	630
3	Lightning Impulse Withstand Voltage (BIL) (kV)	20	20
4	Power Frequency Withstand Voltage (kV)	dry 10 wet 10	dry 10 wet 10
5	Creepage Distance (mm)	55	75
6	Rated Thermal Short-time Current (2s) (kA)	4,42	11,14
7	Rated Dynamic Current (kA)	15,63	39,37
8	Minimum Cantilever Withstand Load (N)	1000	1000

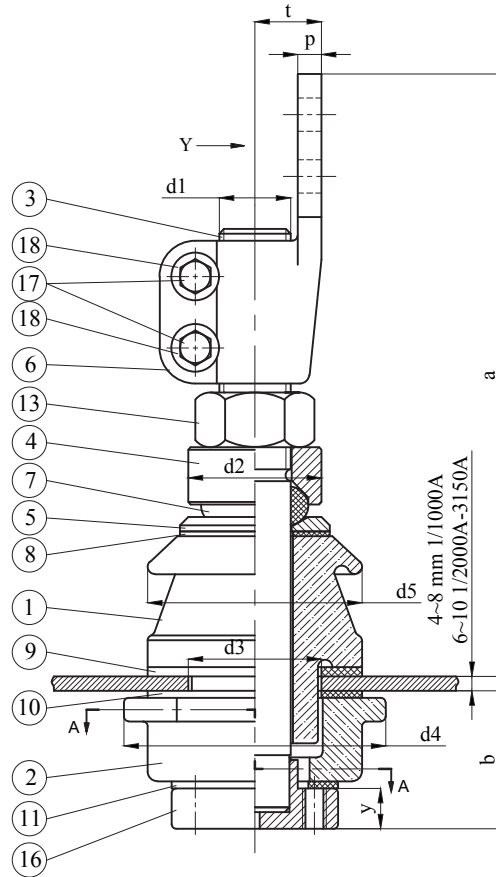
18	1	Washer DIN 125
17	1	Screw DIN 933
16	1	Closing Piece
15	2	Brass Lock Nut DIN 936
14	1	Spring Washer DIN 127
13	3	Brass Nut DIN 934
12	2	Brass Washer DIN 125
11	1	Internal Gasket "P"
10	1	Internal Gasket "O"
9	1	Flange Gasket "N"
8	1	Plain Gasket "M"
7	1	Ring Gasket "J"
6	1	Brass Flag DIN 43675-DP
5	1	Brass Washer "G"
4	1	Brass Washer "E"
3	1	Brass Stem "Y"
2	1	Bottom Porcelain "B"
1	1	Top Porcelain "A"
POS.	PCS.	DESCRIPTION



\*\*\*All dimensions are "mm"

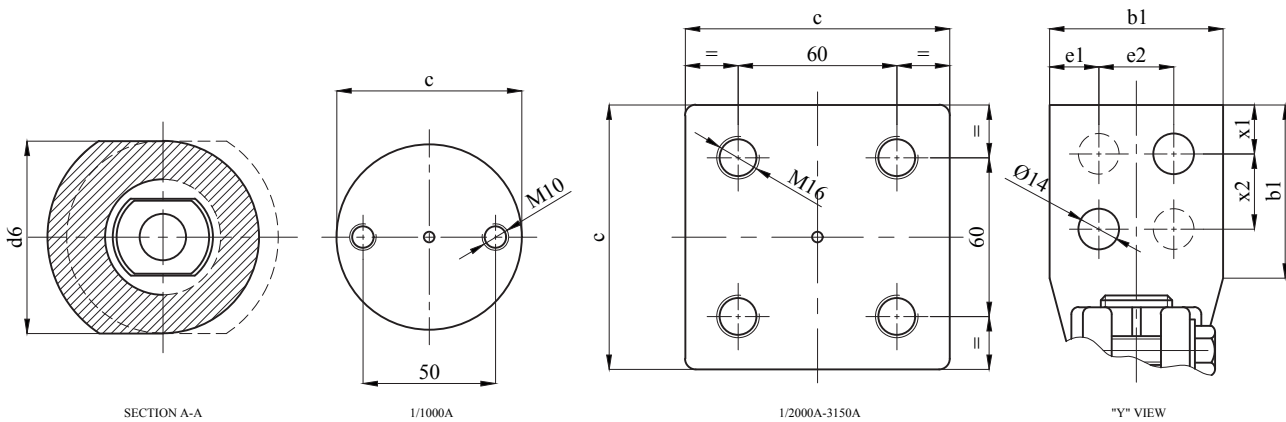
Type	Description	a max	b max	s ±0,3	d1	d2	d3	d4	d5	d6	p	t	b1	e1	Weight (-kg)
1/250A	Without Flag	138	68	25	M12x1,75	28	28	60	50	50	8	20	40	20	0.8
	With Flag														1.1
1/630A	Without Flag	178	82	37	M20x2,5	40	45	85	70	70	8	20	40	20	1.9
	With Flag														2.2

1 kV 1000 A ÷ 3150 A  
DIN 42530 Transformer Bushings



Insulation Levels acc. to IEC 60137:2017				
1	Highest Voltage (kV)	1,2	1,2	1,2
2	Rated Current (A)	1000	2000	3150
3	Lightning Impulse Withstand Voltage (BIL) (kV)	20	20	20
4	Power Frequency Withstand Voltage (kV)	dry 10 wet 10	dry 10 wet 10	dry 10 wet 10
5	Creepage Distance (mm)	75	75	75
6	Rated Thermal Short-time Current (2s) (kA)	17,68	35,36	55,68
7	Rated Dynamic Current (kA)	62,5	125	196,87
8	Minimum Cantilever Withstand Load (N)	1250	2000	3150

18	2	Washer DIN 125
17	2	Screw DIN 933
16	1	Brass Closing Piece
13	1	Brass Nut DIN 934
11	1	Internal Gasket "R"
10	1	Internal Gasket "X"
9	1	Flange Gasket "N"
8	1	Plain Gasket "M"
7	1	Ring Gasket "J"
6	1	Brass Flag DIN 43675
5	1	Brass Washer "G"
4	1	Brass Washer "E"
3	1	Stem "Z"
2	1	Bottom Porcelain "B"
1	1	Top Porcelain "A"
POS.	PCS.	DESCRIPTION



\*\*\*All dimensions are "mm"

Type	a <sub>max</sub>	b <sub>max</sub>	c	y	d1	d2	d3	d4	d5	d6	p	t	b1	e1	e2	x1	x2	Weight (-kg)	Holes (Flag)
1/1000A	263	60	70	17	M30x2	56	56	110	90	90	10	28	60	17	26	17	26	4.8	2
1/2000A	340	65	100	22	M42x3	70	70	125	104	104	15	40	100	25	50	20	40	11	4
1/3150A	372	70	110	27	M48x3	80	90	150	125	125	15	45	120	30	60	20	40	15	4