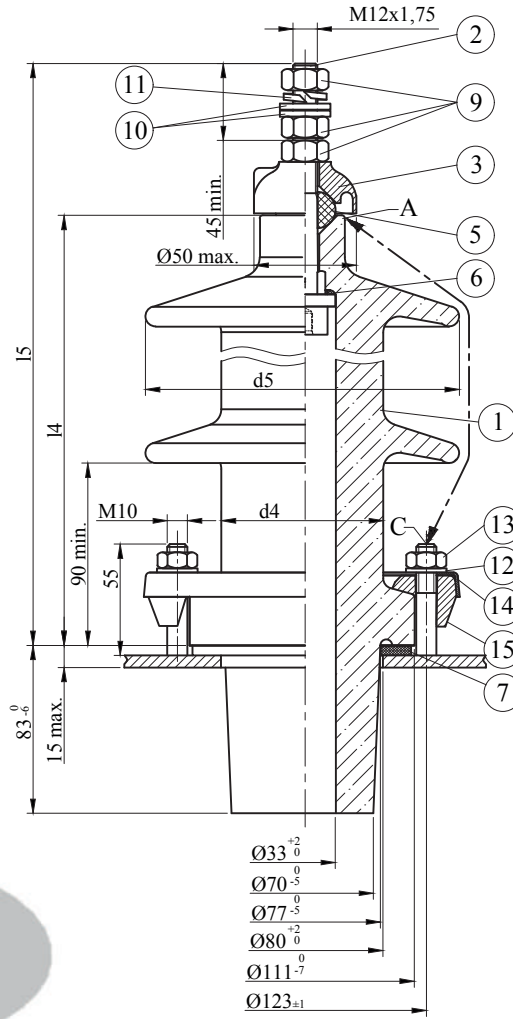


**36 kV 250 A
EN 50180 Transformer Bushings**


Insulation Levels acc. to IEC 60137:2017		
1	Highest Voltage (kV)	36
2	Rated Current (A)	250
3	Lightning Impulse Withstand Voltage (BIL) (kV)	170
4	Power Frequency Withstand Voltage (kV)	dry 77 wet 70
6	Rated Thermal Short-time Current (2s) (kA)	4,42
7	Rated Dynamic Current (kA)	15,63
8	Minimum Cantilever Withstand Load (N)	1000

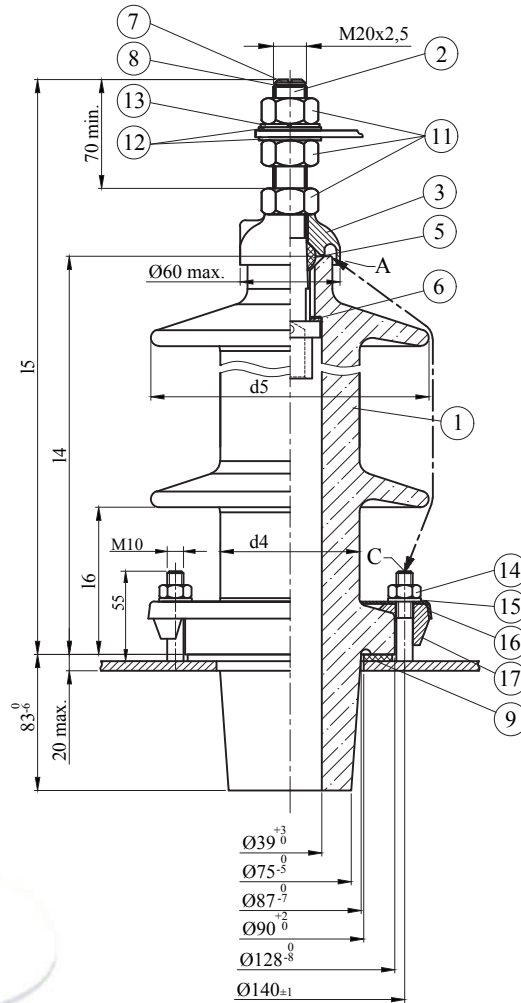
***All dimensions are "mm"
n* 4 fixing studs steel M10x55 (not supplied with the kit) Bolt circle 123 mm

Type / Creepage Distance [mm]	Arcing Distance AC [mm]	I4 max	I5 max	d4 max	d5 max
36 - 250 / P1 (Type 3) / 605	315	357	437	80	155
36 - 250 / P3 (Type 4) / 935	465	516	596	80	155
36 - 250 / P4 (Type 5) / 1165	485	516	596	80	190

15	4	Alu-Clamping	"E" DIN 42538		
14	1	Fixing Ring	"A" DIN 42538		
13	4	Nuts	M10 DIN 934		
12	4	Washer	10,5 DIN 125		
11	1	Spring Washer	DIN 127		
10	2	Brass Washer	DIN 125-Ms		
9	3	Brass Nuts	M12 DIN 934-Ms		
7	1	Flange Gasket	"N" DIN 42531		
6	1	Internal Gasket	"O" DIN 42531		
5	1	Sealing Ring Gasket	"J" DIN 42531		
3	1	Brass Cap	"E" DIN 42531		
2	1	Brass Bolt	"D" DIN 42531		
1	-	-	1	Porcelain	36 - 250 / P4
	-	1	-		36 - 250 / P3
	1	-	-		36 - 250 / P1
POS.	Type 3	Type 4	Type 5	NAME OF THE MATERIAL	DESCRIPTION



36 kV 630 A
EN 50180 Transformer Bushings

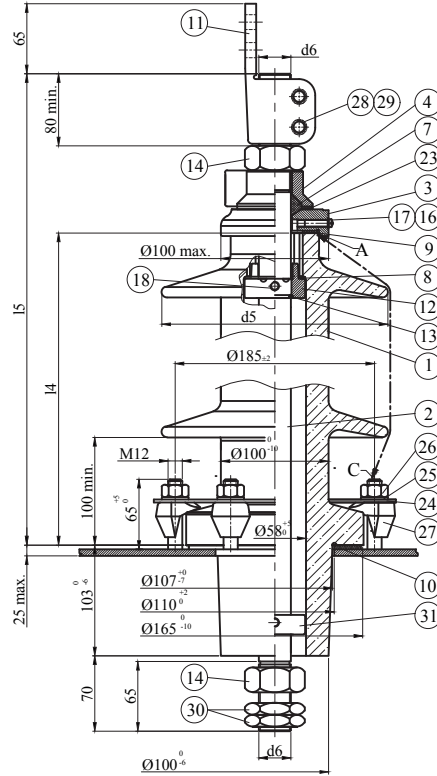


Insulation Levels acc. to IEC 60137:2017		
1	Highest Voltage (kV)	36
2	Rated Current (A)	630
3	Lightning Impulse Withstand Voltage (BIL) (kV)	170
4	Power Frequency Withstand Voltage (kV)	dry 77 wet 70
6	Rated Thermal Short-time Current (2s) (kA)	11,14
7	Rated Dynamic Current (kA)	39,37
8	Minimum Cantilever Withstand Load (N)	1000

***All dimensions are "mm"
n* 6 fixing studs steel M10x55 (not supplied with the kit) Bolt circle 140 mm

Type / Creepage Distance [mm]	Arcing Distance AC [mm]	14 max	15 max	16 max	d4 max	d5 max
36 - 630 / P2 (Type 8) / 760	375	423	540	100	85	180
36 - 630 / P4 (Type 9) / 1115	475	515	630	100	85	210

17	6	Alu-Clamping	"E" DIN 42538	
16	1	Fixing Ring	"B" DIN 42538	
15	6	Washer	10,5 DIN 125	
14	6	Nuts	M10 DIN 934	
13	1	Spring Washer	DIN 127	
12	2	Brass Washer	DIN 125-MS	
11	3	Brass Nuts	M20 DIN 934-MS	
9	1	Flange Gasket	"N" DIN 42532	
8	1	Packing	"F" DIN 42532	
7	1	Exhaust Screw	"T" DIN 42532	
6	1	Internal Gasket	"O" DIN 42532	
5	1	Sealing Ring Gasket	"J" DIN 42532	
3	1	Brass Cap	"E" DIN 42532	
2	1	Brass Bolt	"D" DIN 42532	
1	-	1	Porcelain	
	1	-	36 - 630 / P4	
			36 - 630 / P2	
POS.	Type 8	Type 9	NAME OF THE MATERIAL	DESCRIPTION

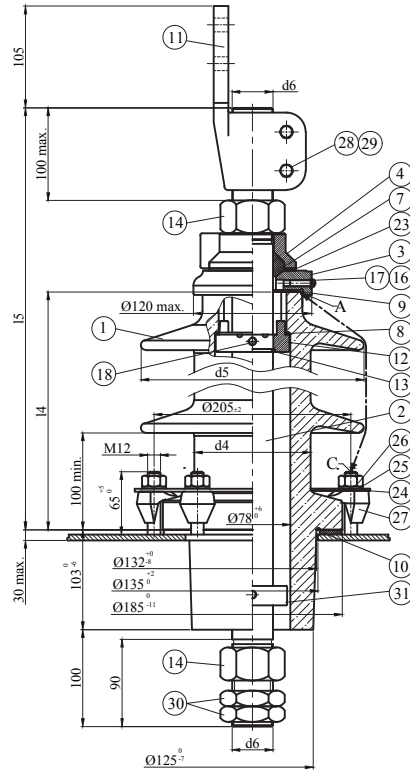
**36 kV 1250 A
EN 50180 Transformer Bushings**


Insulation Levels acc. to IEC 60137:2017		
1	Highest Voltage (kV)	36
2	Rated Current (A)	1250
3	Lightning Impulse Withstand Voltage (BIL) (kV)	170
4	Power Frequency Withstand Voltage (kV)	dry 77 wet 70
6	Rated Thermal Short-time Current (2s) (kA)	22,1
7	Rated Dynamic Current (kA)	78,12
8	Minimum Cantilever Withstand Load (N)	1250

***All dimensions are "mm"
n* 6 fixing studs steel M12x65 (not supplied with the kit) Bolt circle 185 mm

Type / Creepage Distance [mm]	Arcing Distance AC [mm]	I4 max	I5 max	d5 max	d6
36 - 1250 / P3 (Type 23) / 930	385	420	575	240	M30x2
36 - 1250 / P4 (Type 24) / 1145	500	535	690	240	

31	1	Polymeric Washer		
30	2	Brass Lock Nut M30	DIN 936	
29	2	Screw M10x40	DIN 933	
28	2	Washer M10	DIN 125	
27	6	Alu-Clamping	DIN 42538	
26	6	Nut M12	DIN 934	
25	6	Washer M12	DIN 125	
24	1	Fixing Ring		
23	1	Copper Snap Ring	"U" DIN 42533	
18	4	Set Screw	DIN 553 (M8x15)	
17	1	Washer	DIN 125	
16	1	Brass Screw	DIN 42533	
14	2	Brass Nut	M30x2 DIN 934-Ms	
13	1	Copper Ring	"S" DIN 42533	
12	1	Pressure Ring		
11	1	Brass Flag	DIN 43675-EP	
10	1	Flange Gasket	"N" DIN 42533	
9	1	Plain Gasket	"M" DIN 42533	
8	1	Internal Gasket	"O" DIN 42533	
7	1	Sealing Ring Gasket	"J" DIN 42533	
4	1	Brass Disc	"F" DIN 42533	
3	1	Brass Cap	"E" DIN 42533	
2	-	1	Connecting Bolt	
	1			-
1	-	1	Porcelain	
	1			-
POS.	Type 23	Type 24	NAME OF THE MATERIAL	DESCRIPTION

**36 kV 2000 A
EN 50180 Transformer Bushings**


Insulation Levels acc. to IEC 60137:2017		
1	Highest Voltage (kV)	36
2	Rated Current (A)	2000
3	Lightning Impulse Withstand Voltage (BIL) (kV)	170
4	Power Frequency Withstand Voltage (kV)	dry 77 wet 70
6	Rated Thermal Short-time Current (2s) (kA)	35,36
7	Rated Dynamic Current (kA)	125
8	Minimum Cantilever Withstand Load (N)	2000

***All dimensions are "mm"
n* 6 fixing studs steel M12x65 (not supplied with the kit) Bolt circle 205 mm

Type / Creepage Distance [mm]	Arcing Distance AC [mm]	l4 max	l5 max	d4 max	d5 max	d6
36 - 2000 / P3 (Type 27) / 920	385	420	610	125	260	M42x3
36 - 2000 / P4 (Type 28) / 1145	495	535	725	125	260	

31	1	Polymeric Washer		
30	2	Brass Lock Nut M42	DIN 936	
29	2	Screw M12x50	DIN 933	
28	2	Washer M12	DIN 125	
27	6	Alu-Clamping	DIN 42538	
26	6	Nut M12	DIN 934	
25	6	Washer M12	DIN 125	
24	1	Fixing Ring		
23	1	Copper Snap Ring	"U" DIN 42533	
18	4	Set Screw	DIN 553 (M8x15)	
17	1	Washer	DIN 125	
16	1	Brass Screw	DIN 42533	
14	2	Brass Nut	M42x3 DIN 934-Ms	
13	1	Copper Ring	"S" DIN 42533	
12	1	Pressure Ring		
11	1	Brass Flag	DIN 43675-FP	
10	1	Flange Gasket	"N" DIN 42533	
9	1	Plain Gasket	"M" DIN 42533	
8	1	Internal Gasket	"O"	
7	1	Sealing Ring Gasket	"J" DIN 42533	
4	1	Brass Disc	"F" DIN 42533	
3	1	Brass Cap	"E" DIN 42533	
2	-	1	36 - 2000 / P4	
	1	-	36 - 2000 / P3	
1	-	1	36 - 2000 / P4	
	1	-	36 - 2000 / P3	
POS.	Type 27	Type 28	NAME OF THE MATERIAL	DESCRIPTION

