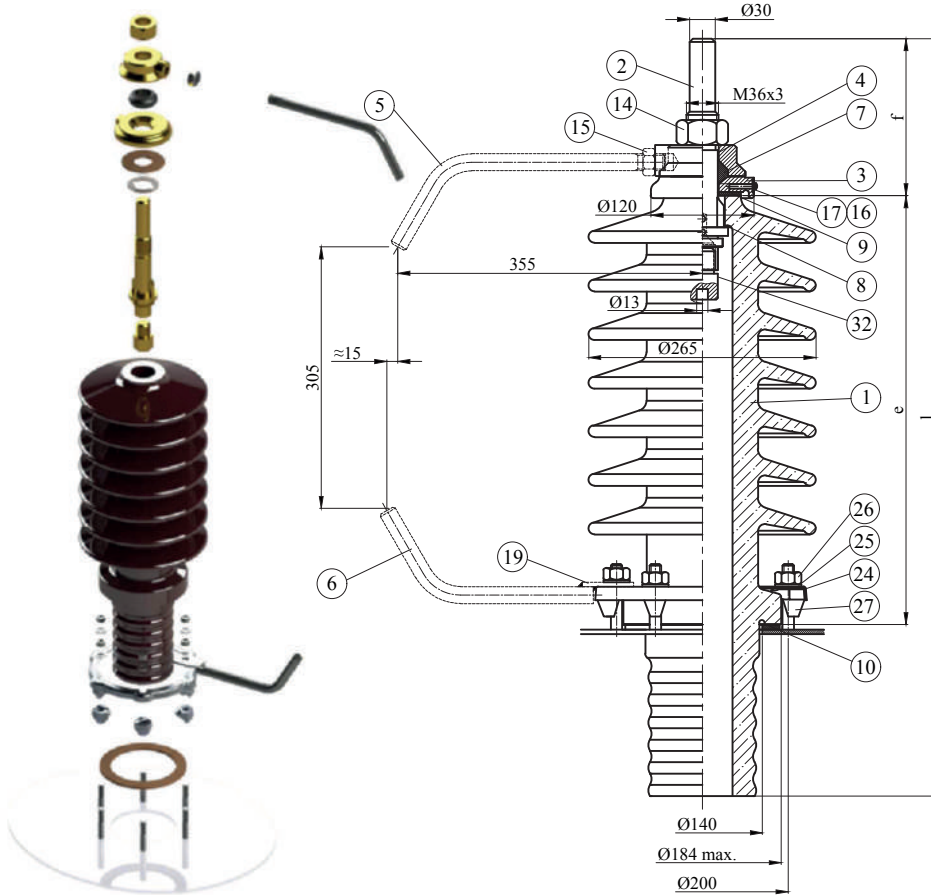


45 kV 1000 A  
DIN 42534 Outdoor Transformer Bushing



Insulation Levels acc. to IEC 60137:2017		
1	Highest Voltage (kV)	45
2	Rated Current (A)	1000
3	Lightning Impulse Withstand Voltage (BIL) (kV)	250
4	Power Frequency Withstand Voltage (kV)	dry 105 wet 95
6	Rated Thermal Short-time Current (2s) (kA)	17,68
7	Rated Dynamic Current (kA)	62,5
8	Minimum Cantilever Withstand Load (N)	1250

\*\*\*All dimensions are "mm"  
n\* 6 fixing studs steel M12x70 (not supplied with the kit) Bolt circle 200 mm

Type	e	f	l
45-1000	500	183	883

19	1	Bearing Lower Stem	"H" DIN 42534
15	1	Nut M20	DIN 934
6	1	Bottom Arcing Horn	"H" DIN 42534
5	1	Top Arcing Horn	"G" DIN 42534

32	1	Adaptor	"C" DIN 42534
27	6	Alu-Clamping	DIN 42538
26	6	Nut M12	DIN 934
25	6	Washer M12	DIN 125
24	1	Fixing Ring	"D" DIN 42538
17	1	Washer	DIN 125
16	1	Brass Screw	DIN 42533
14	1	Brass Nut	M36x3 DIN 934-Ms
10	1	Flange Gasket	"N" DIN 42533
9	1	Plain Gasket	"M" DIN 42534
8	1	Internal Gasket	"O" DIN 42534
7	1	Sealing Ring Gasket	"J" DIN 42534
4	1	Brass Disc	"F" DIN 42534
3	1	Brass Cap	"E" DIN 42534
2	1	Connecting Bolt	DIN 42534
1	1	Porcelain	DIN 42534
POS.	PCS.	NAME OF THE MATERIAL	DESCRIPTION