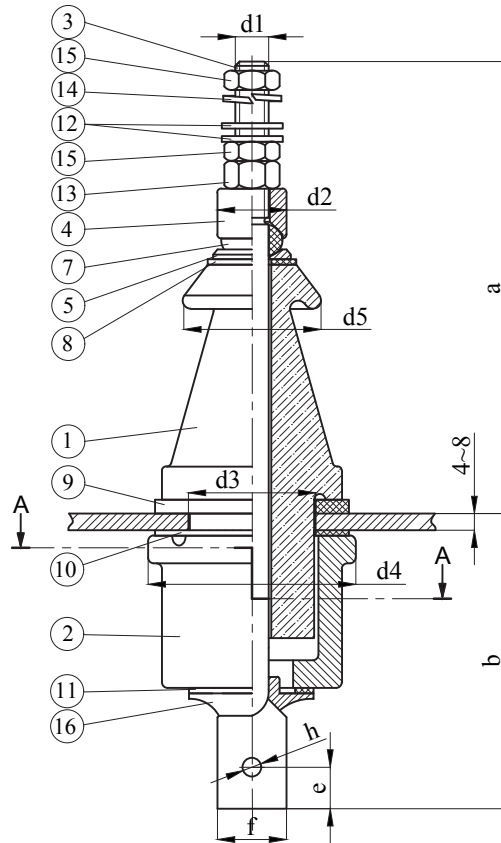


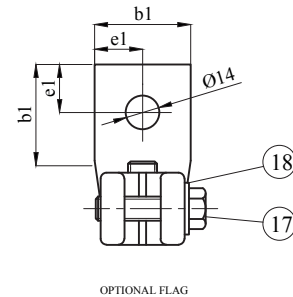
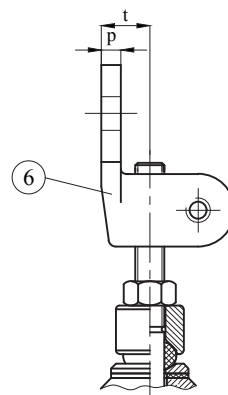
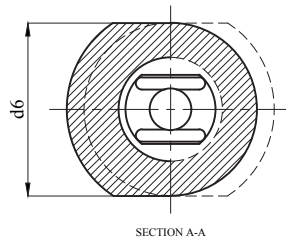
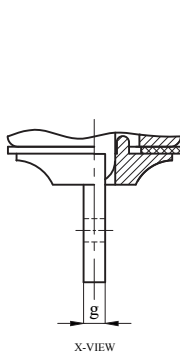
5 kV 250 A
Transformer Bushing



Insulation Levels acc. to IEC 60137:2017

POS.	PCS.	DESCRIPTION
1	1	Highest Voltage (kV) 5
2	1	Rated Current (A) 250
3	1	Lightning Impulse Withstand Voltage (BIL) (kV) 40
4	1	Power Frequency Withstand Voltage (kV) dry 11 wet 10
5	1	Creepage Distance (mm) 100
6	1	Rated Thermal Short-time Current (2s) (kA) 4,4
7	1	Rated Dynamic Current (kA)m 15,63
8	1	Minimum Cantilever Withstand Load (N) 1000

POS.	PCS.	DESCRIPTION
18	1	Washer DIN 125
17	1	Screw DIN 933
16	1	Closing Piece
15	2	Brass Lock Nut DIN 936
14	1	Spring Washer DIN 127
13	1	Brass Nut DIN 934
12	2	Brass Washer DIN 125
11	1	Internal Gasket "P"
10	1	Internal Gasket "O"
9	1	Flange Gasket "N"
8	1	Plain Gasket "M"
7	1	Ring Gasket "J"
6	1	Brass Flag DIN 43675-DP
5	1	Brass Washer "G"
4	1	Brass Washer "E"
3	1	Brass Stem
2	1	Bottom Porcelain "B"
1	1	Top Porcelain "A"



***All dimensions are "mm"

Type	Description	a	b	e	f	g	h	d1	d2	d3	d4	d5	d6	p	t	b1	e1	Weight (-kg)
5 / 250A	Without Flag	164	106	15	25	5	Ø7	M12x1,75	25	46	75	50	65	8	20	40	20	1.2
	With Flag																	1.6