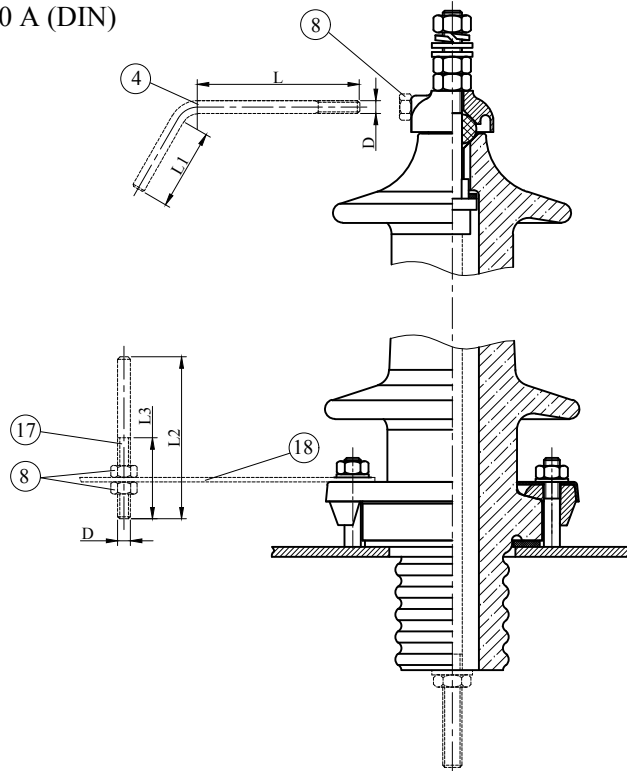


### Arcing Horns for High Voltage 12 ÷ 36 kV 250 A (DIN)



"V" Type

CLASS	POS.	PCS.	NAME	D	L	L1	L2	L3	MATERIAL	DESCRIPTION
12 - 24 kV 250 A (DIN)	18	1	"V" Bracket	-	-	-	-	-	Stainless Steel	DIN 42531
	17	1	Bottom Arcing Horn	M8	-	-	100	50	Stainless Steel	DIN 42531
	8	3	Nuts	-	-	-	-	-	Stainless Steel	M8 DIN 934
	4	1	Top Arcing Horn	M8	100	50	-	-	Stainless Steel	"K2" DIN 42531

"I" Type

CLASS	POS.	PCS.	NAME	D	L	L1	L2	L3	MATERIAL	DESCRIPTION
12 - 24 kV 250 A (DIN)	18	1	"I" Bracket	-	-	-	-	-	Stainless Steel	DIN 42531
	17	1	Bottom Arcing Horn	M8	-	-	100	50	Stainless Steel	DIN 42531
	8	3	Nuts	-	-	-	-	-	Stainless Steel	M8 DIN 934
	4	1	Top Arcing Horn	M8	100	50	-	-	Stainless Steel	"K2" DIN 42531

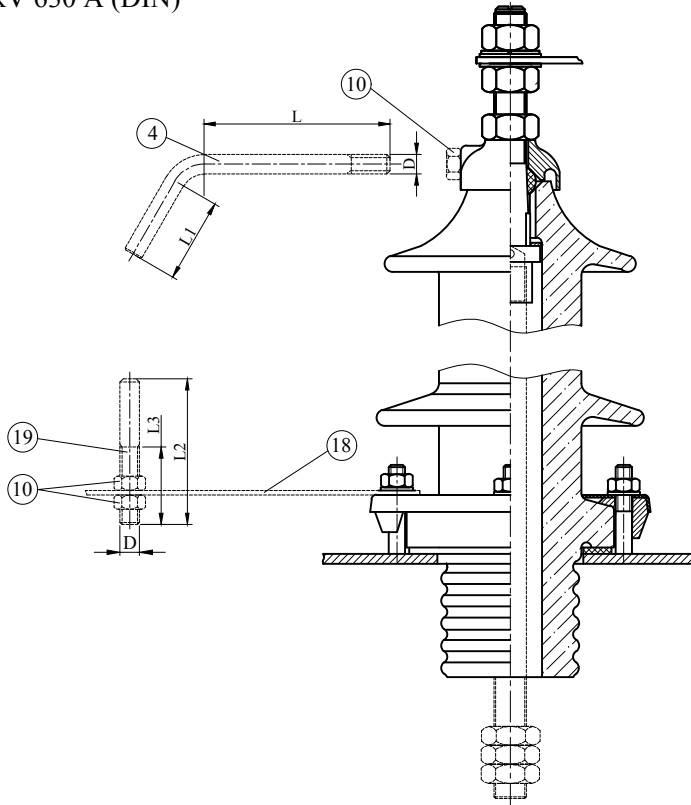
"V" Type

CLASS	POS.	PCS.	NAME	D	L	L1	L2	L3	MATERIAL	DESCRIPTION
36 kV 250 A (DIN)	18	1	"V" Bracket	-	-	-	-	-	Stainless Steel	DIN 42531
	17	1	Bottom Arcing Horn	M8	-	-	100	50	Stainless Steel	DIN 42531
	8	3	Nuts	-	-	-	-	-	Stainless Steel	M8 DIN 934
	4	1	Top Arcing Horn	M8	100	87	-	-	Stainless Steel	"K3" DIN 42531

"I" Type

CLASS	POS.	PCS.	NAME	D	L	L1	L2	L3	MATERIAL	DESCRIPTION
36 kV 250 A (DIN)	18	1	"I" Bracket	-	-	-	-	-	Stainless Steel	DIN 42531
	17	1	Bottom Arcing Horn	M8	-	-	100	50	Stainless Steel	DIN 42531
	8	3	Nuts	-	-	-	-	-	Stainless Steel	M8 DIN 934
	4	1	Top Arcing Horn	M8	100	87	-	-	Stainless Steel	"K3" DIN 42531

### Arcing Horns for High Voltage 12 ÷ 36 kV 630 A (DIN)



"V" Type

CLASS	POS.	PCS.	NAME	D	L	L1	L2	L3	MATERIAL	DESCRIPTION
12 - 24 kV 630 A (DIN)	19	1	Bottom Arcing Horn	M12	-	-	90	48	Stainless Steel	DIN 42532
	18	1	"V" Bracket	-	-	-	-	-	Stainless Steel	DIN 42532
	10	3	Nuts	-	-	-	-	-	Stainless Steel	M12 DIN 934
	4	1	Top Arcing Horn	M12	115	52	-	-	Stainless Steel	"K2" DIN 42532

"I" Type

CLASS	POS.	PCS.	NAME	D	L	L1	L2	L3	MATERIAL	DESCRIPTION
12 - 24 kV 630 A (DIN)	19	1	Bottom Arcing Horn	M12	-	-	90	48	Stainless Steel	DIN 42532
	18	1	"I" Bracket	-	-	-	-	-	Stainless Steel	DIN 42532
	10	3	Nuts	-	-	-	-	-	Stainless Steel	M12 DIN 934
	4	1	Top Arcing Horn	M12	115	52	-	-	Stainless Steel	"K2" DIN 42532

"V" Type

CLASS	POS.	PCS.	NAME	D	L	L1	L2	L3	MATERIAL	DESCRIPTION
36 kV 630 A (DIN)	19	1	Bottom Arcing Horn	M12	-	-	115	60	Stainless Steel	DIN 42532
	18	1	"V" Bracket	-	-	-	-	-	Stainless Steel	DIN 42532
	10	3	Nuts	-	-	-	-	-	Stainless Steel	M12 DIN 934
	4	1	Top Arcing Horn	M12	122	82	-	-	Stainless Steel	"K3" DIN 42532

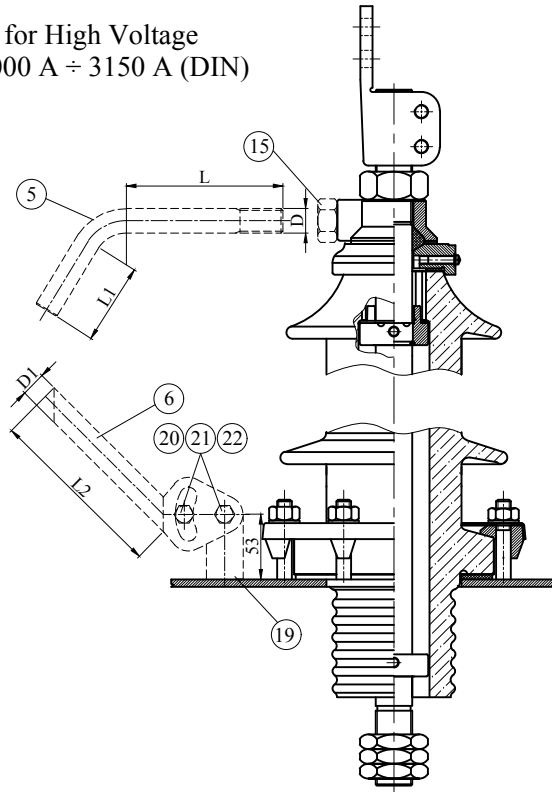
"I" Type

CLASS	POS.	PCS.	NAME	D	L	L1	L2	L3	MATERIAL	DESCRIPTION
36 kV 630 A (DIN)	19	1	Bottom Arcing Horn	M12	-	-	115	60	Stainless Steel	DIN 42532
	18	1	"I" Bracket	-	-	-	-	-	Stainless Steel	DIN 42532
	10	3	Nuts	-	-	-	-	-	Stainless Steel	M12 DIN 934
	4	1	Top Arcing Horn	M12	122	82	-	-	Stainless Steel	"K3" DIN 42532

\*\*\*All dimensions are "mm"

Ankara Seramik A.Ş. | Created : 02.07.2019 | Rev.00

### Arcing Horns for High Voltage 12 ÷ 36 kV 1000 A ÷ 3150 A (DIN)

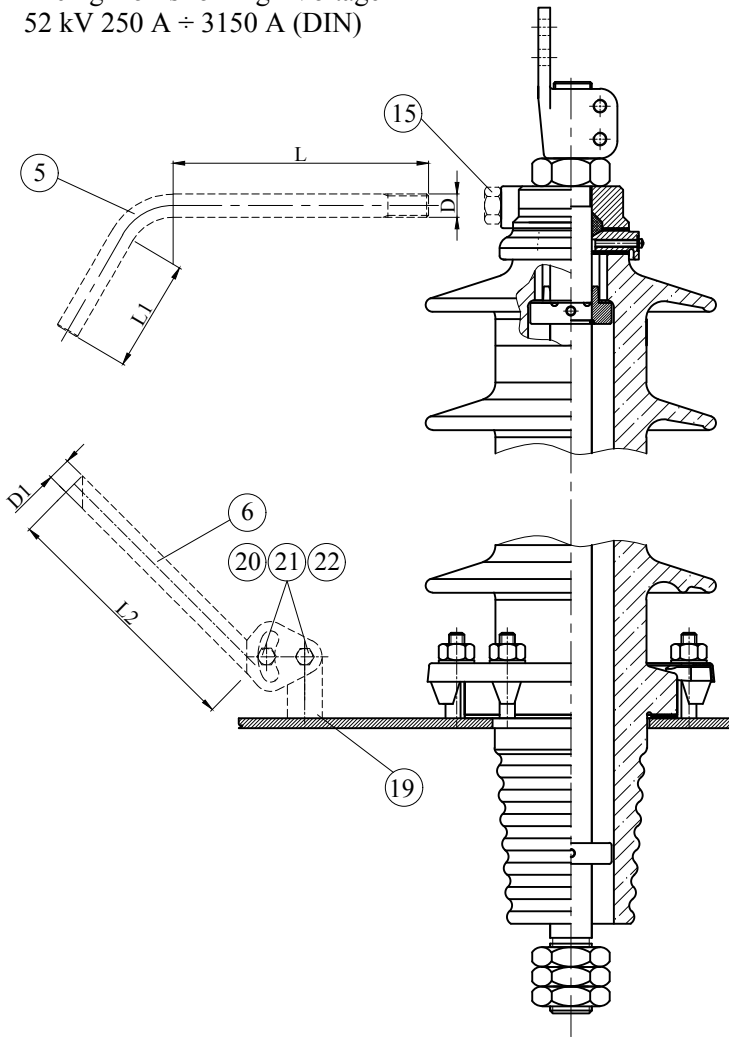


CLASS	POS.	PCS.	NAME	D	D1	L	L1	L2	MATERIAL	DESCRIPTION
12 kV 1000 A ÷ 3150 A (DIN)	22	2	Spring Washer M12	-	-	-	-	-	Stainless Steel	DIN 127
	21	2	Nut M12	-	-	-	-	-	Stainless Steel	DIN 934
	20	2	Screw M12x30	-	-	-	-	-	Stainless Steel	DIN 933
	19	1	Bearing Lower Stem	-	-	-	-	-	Stainless Steel	"T" DIN 42533
	15	1	Nut M20	-	-	-	-	-	Stainless Steel	DIN 934
	6	1	Lower Stem	-	20	-	-	85	Stainless Steel	"H10" DIN 42533
	5	1	Top Arcing Horn	M20	-	130	66	-	Stainless Steel	"G10" DIN 42533

CLASS	POS.	PCS.	NAME	D	D1	L	L1	L2	MATERIAL	DESCRIPTION
24 kV 1000 A ÷ 3150 A (DIN)	22	2	Spring Washer M12	-	-	-	-	-	Stainless Steel	DIN 127
	21	2	Nut M12	-	-	-	-	-	Stainless Steel	DIN 934
	20	2	Screw M12x30	-	-	-	-	-	Stainless Steel	DIN 933
	19	1	Bearing Lower Stem	-	-	-	-	-	Stainless Steel	"T" DIN 42533
	15	1	Nut M20	-	-	-	-	-	Stainless Steel	DIN 934
	6	1	Lower Stem	-	20	-	-	145	Stainless Steel	"H20" DIN 42533
	5	1	Top Arcing Horn	M20	-	130	66	-	Stainless Steel	"G10" DIN 42533

CLASS	POS.	PCS.	NAME	D	D1	L	L1	L2	MATERIAL	DESCRIPTION
36 kV 1000 A ÷ 3150 A (DIN)	22	2	Spring Washer M12	-	-	-	-	-	Stainless Steel	DIN 127
	21	2	Nut M12	-	-	-	-	-	Stainless Steel	DIN 934
	20	2	Screw M12x30	-	-	-	-	-	Stainless Steel	DIN 933
	19	1	Bearing Lower Stem	-	-	-	-	-	Stainless Steel	"T" DIN 42533
	15	1	Nut M20	-	-	-	-	-	Stainless Steel	DIN 934
	6	1	Lower Stem	-	20	-	-	180	Stainless Steel	"H30" DIN 42533
	5	1	Top Arcing Horn	M20	-	176	96	-	Stainless Steel	"G30" DIN 42533

**Arcing Horns for High Voltage**  
**52 kV 250 A ÷ 3150 A (DIN)**



CLASS	POS.	PCS.	NAME	D	D1	L	L1	L2	MATERIAL	DESCRIPTION
52 kV 250 A ÷ 3150 A (DIN)	22	2	Spring Washer M12	-	-	-	-	-	Stainless Steel	DIN 127
	21	2	Nut M12	-	-	-	-	-	Stainless Steel	DIN 934
	20	2	Screw M12x30	-	-	-	-	-	Stainless Steel	DIN 933
	19	1	Bearing Lower Stem	-	-	-	-	-	Stainless Steel	"T" DIN 42533
	15	1	Nut M20	-	-	-	-	-	Stainless Steel	DIN 934
	6	1	Lower Stem	-	20	-	-	200	Stainless Steel	DIN 42534
	5	1	Top Arcing Horn	M20	-	210	95	-	Stainless Steel	DIN 42534